

CLINTON, IOWA LABORSHED AREA



A STUDY IN LABOR AVAILABILITY AND WORKFORCE CHARACTERISTICS
EXECUTIVE SUMMARY

WWW.IOWALMI.GOV/LABORSHED

RELEASED
2021

ESTIMATED POPULATION
AGES 18-64

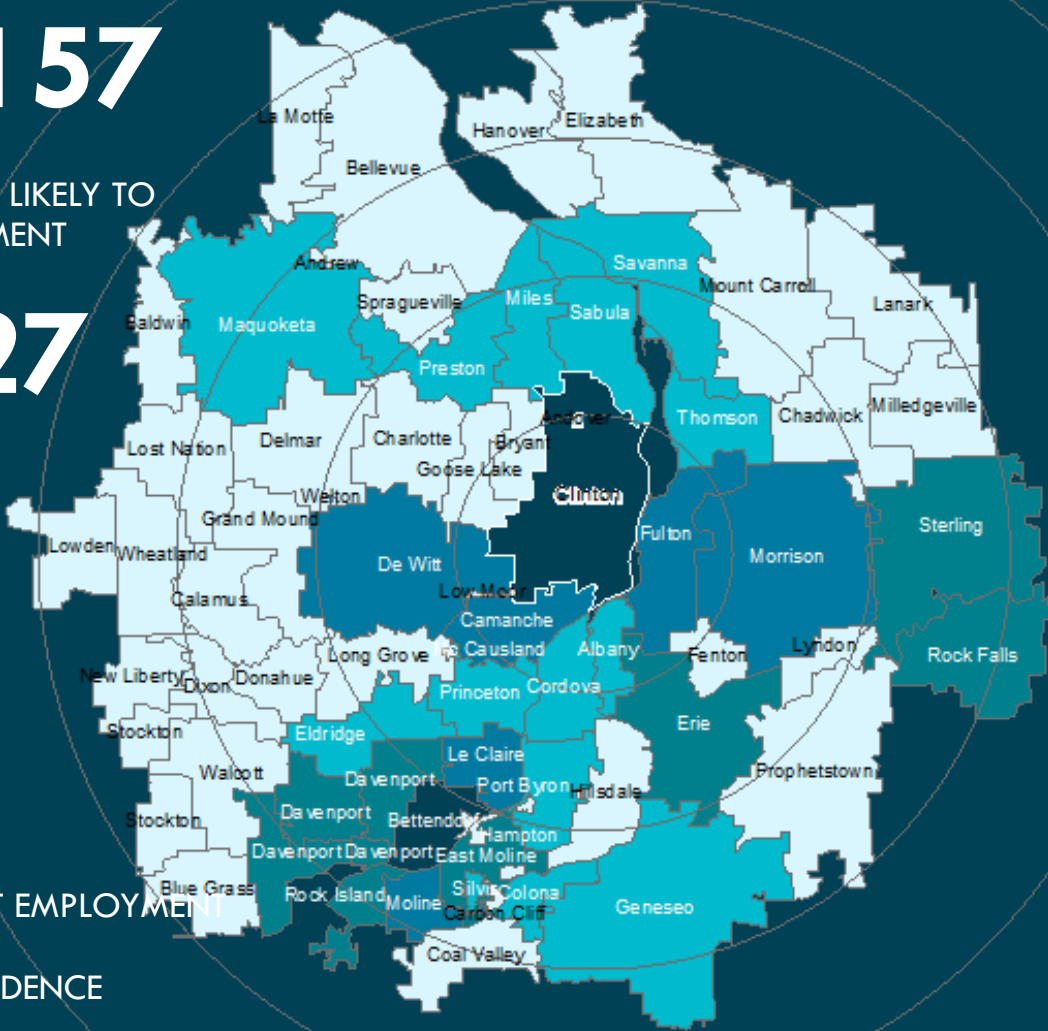
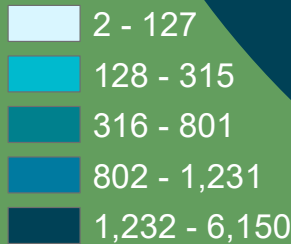
259,157

ESTIMATED TOTAL LIKELY TO
ACCEPT EMPLOYMENT
IN CLINTON, IA

28,327



LIKELY TO
CHANGE/ACCEPT EMPLOYMENT
IN CLINTON, IA
BY PLACE OF RESIDENCE
(PER ZIP CODE)



10-Mile Interval Between Rings



AREA SHOWN

CLINTON LABORSHED ANALYSIS

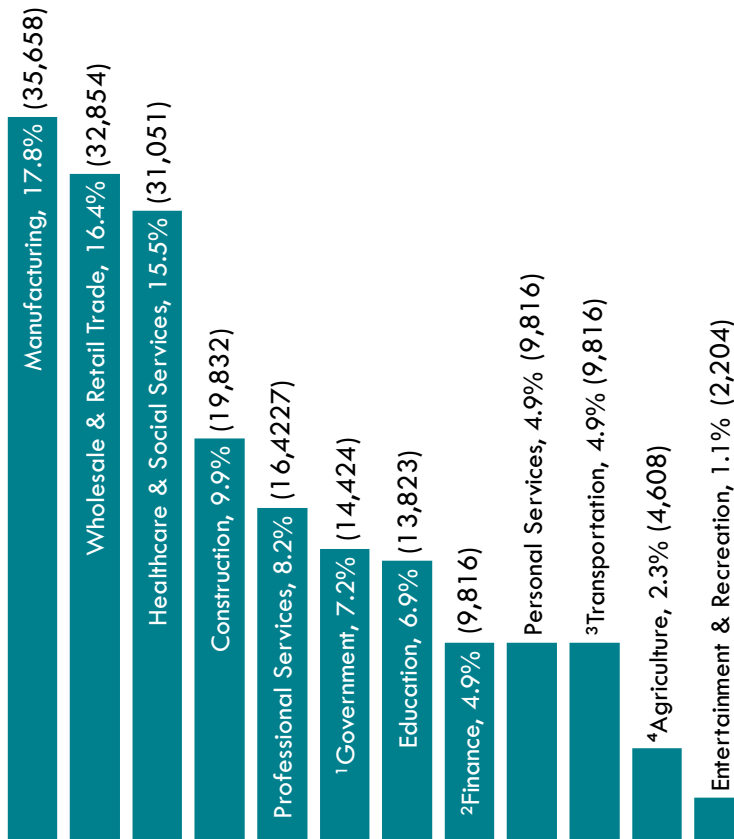
EMPLOYMENT STATUS (ESTIMATED TOTAL)*



*Employment status is self-identified by the survey respondent. The unemployment percentage above does not reflect the unemployment rate published by the U.S. Bureau of Labor Statistics, which applies a stricter definition.



BREAKOUT OF THE EMPLOYED BY INDUSTRY (ESTIMATED TOTAL)



Totals may vary due to rounding.

¹Public Administration, Government

³Transportation, Communications, & Utilities

²Finance, Insurance, & Real Estate

⁴Agriculture, Forestry, & Mining

TOP CURRENT BENEFITS OF THE FULL-TIME EMPLOYED

	Health/Medical Insurance	92.7%
	Dental Coverage	88.2%
	Pension/Retirement/401K	88.2%
	Paid Vacation	85.9%
	Life Insurance	84.1%
	Paid Holiday	81.8%
	Vision Coverage	81.8%
	Disability Insurance	75.9%
	Prescription Drug Coverage	66.4%
	Flex Spending Account	54.5%

A Laborshed area is defined by its commuting pattern and illustrates which communities contribute to an employment center's workforce and at what level. To determine the boundaries of a Laborshed area, local employers supply the residential ZIP codes of each of their employees. The data in this publication reflects characteristics specific to the workforce in the Clinton Laborshed area.

The employed are currently commuting an average of—

11

miles one-way for an employment opportunity

&

16 minutes

EMPLOYED: LIKELY TO CHANGE

- An estimated **20,888** employed individuals are likely to change their current employment situation for an opportunity in Clinton

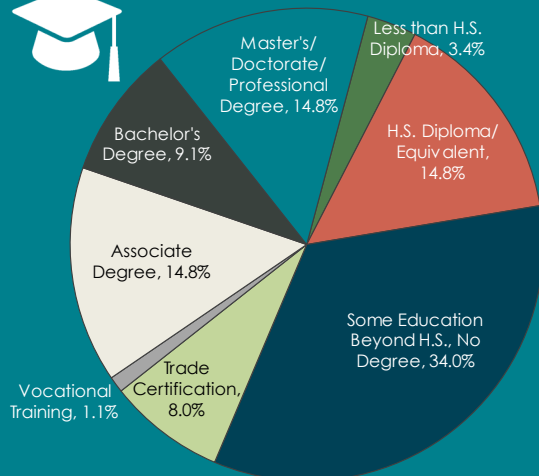
- Current occupational categories:

Production, Construction, Material Moving	31.4%
Professional, Paraprofessional, Technical	24.1%
Service	15.7%
Clerical	9.6%
Managerial	9.6%
Sales	9.6%
Agricultural	0.0%

- Current median wages: \$

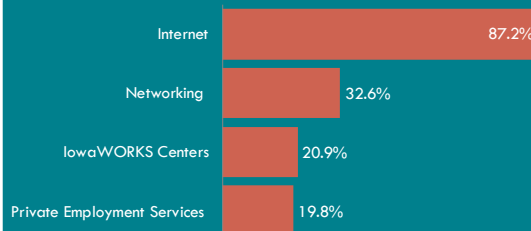
- \$17.05/hour and \$65,500/year
- \$20.00/hour - attracts 66%
- \$22.00/hour - attracts 75%

- 81.8% have an education beyond HS



- 30.3% are actively seeking employment

- Most frequently identified job search resources:



- Top sites:



- Top newspapers:



- Commute:

- Currently commuting an average of **11 miles/16 minutes** (one-way) to work
- Willing to commute an average of **24 miles/33 minutes** (one-way) to work

UNEMPLOYED: LIKELY TO ACCEPT

- An estimated **2,925** unemployed individuals are likely to accept employment in Clinton

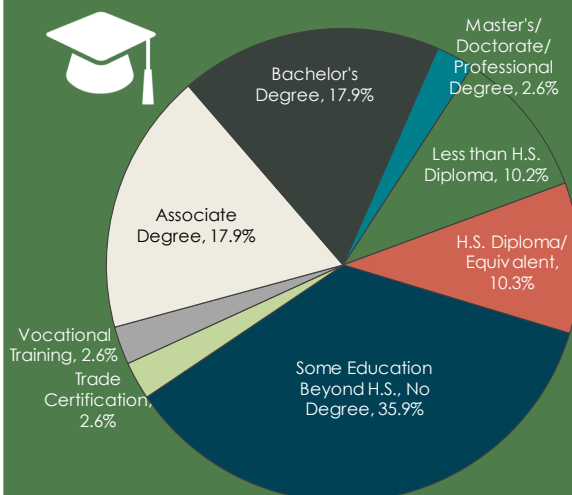
- Former occupational categories:

Production, Construction, Material Moving	35.3%
Clerical	29.4%
Professional, Paraprofessional, Technical	14.7%
Service	11.8%
Managerial	5.9%
Sales	2.9%
Agricultural	0.0%

- Median wages: \$

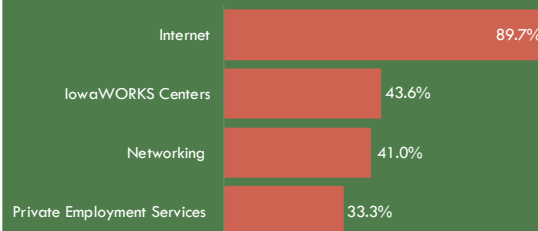
- \$14.00/hour - lowest willing to accept
- \$15.00/hour - attracts 66%
- \$17.40/hour - attracts 75%

- 79.5% have an education beyond HS



- 51.3% are actively seeking employment

- Most frequently identified job search resources:



- Top sites:



- Top newspapers:



- Commute:

- Willing to commute an average of **23 miles/32 minutes** (one-way) to work



The Laborshed survey collects information regarding the **out commute** for an employment center.

The **out commute** for Clinton is estimated at 20.2 percent—approximately 2,216 people living in Clinton work in other communities.

Most of those who are out commuting are working in DeWitt, IA and Cordova, IL.

More than one-third (38.9%) of out commuters are likely to change employment (approximately 862 people).

77.8% earn an hourly wage—median wage is **\$20.30/hour**
16.7% earn an annual salary.

2,216
people live in
Clinton
and work
elsewhere



EDUCATION OF AVAILABLE LABOR BY INDUSTRY OF CURRENT OR FORMER EMPLOYMENT

Data on this page is specific to only those survey respondents that reported they are likely to change or accept employment.



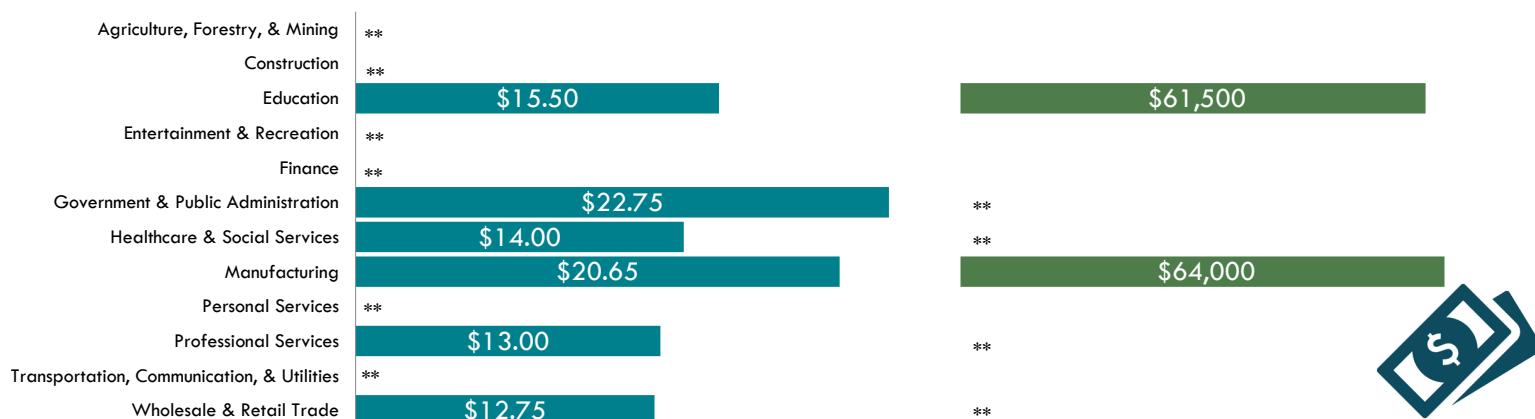
Industry	Education Beyond HS	Some Education Beyond HS, No Degree Obtained	Trade Certification/Vocational Training	Associate Degree	Bachelor's Degree or Above
Agriculture, Forestry, & Mining	**	**	**	**	**
Construction	100%	66.7%	22.2%	0.0%	11.1%
Education	100%	18.2%	9.1%	18.2%	54.5%
Entertainment & Recreation	**	**	**	**	**
Finance, Insurance, & Real Estate	80.0%	20.0%	0.0%	20.0%	40.0%
Government & Public Administration	100%	70.0%	0.0%	10.0%	20.0%
Healthcare & Social Services	94.1%	35.3%	5.9%	17.6%	35.3%
Manufacturing	71.4%	20.0%	14.3%	17.1%	20.0%
Personal Services	80.0%	20.0%	40.0%	20.0%	0.0%
Professional Services	91.7%	41.7%	0.0%	33.3%	16.7%
Transportation, Communication, & Utilities	100%	100%	0.0%	0.0%	0.0%
Wholesale & Retail Trade	64.3%	32.1%	3.6%	14.3%	14.3%

Top percentages among industries per education level are highlighted in the table. **Insufficient survey data/refused

WAGES OF AVAILABLE LABOR BY INDUSTRY OF CURRENT OR FORMER EMPLOYMENT

■ Median Hourly Wage

■ Median Annual Salary



**Insufficient survey data/refused. A lack of data for a particular industry is not necessarily indicative that there were no (or few) individuals surveyed within that industry. Rather, it may be that there simply were no respondents within that industry that also reported that they are likely to change or accept employment.

Note: A wide variety of occupations are included within these industry categories. Industry classification is based upon the respondent's reported current or former employer. Two respondents that work for a manufacturer will be classified within the manufacturing industry even if, for example, one respondent is a custodian and the other is an accountant.

UNDEREMPLOYMENT

The underemployed are working fewer than 35 hours per week but desire more hours (**inadequate hours**); in positions that do not meet their skill or education level, or have worked for higher wages at previous employment (**mismatch of skills**); or are earning wages equal to or less than the national poverty level and work 35 or more hours per week (**low income**).

	Percent Surveyed	Estimated Total
Inadequate Hours	2.7%	564
Low Income	0.2%	42

	Percent Surveyed	Estimated Total
Mismatch of Skills	4.4%	919
Σ †Total	6.7%	1,399

†Individuals may be underemployed for more than one reason but are counted only once for total estimated underemployment.

Note: To be counted as underemployed in any category an individual must be currently employed and likely to change their current employment situation.

IOWA
WORKFORCE
DEVELOPMENT

IOWA
economic development

Data compiled and analyzed by:
Iowa Workforce Development
Labor Market Information Division
1000 E. Grand Avenue, Des Moines, Iowa 50319
Phone: (515) 281-7505 | Email: laborshed.studies@iwd.iowa.gov
www.iowalmi.gov/laborshed

For more information regarding this Laborshed study contact:
Clinton Regional Development Corporation
721 S 2nd St
Clinton, IA 52732
Phone: (563) 242-4536 | E-mail: ecol@clintondevelopment.com
www.clintondevelopment.com

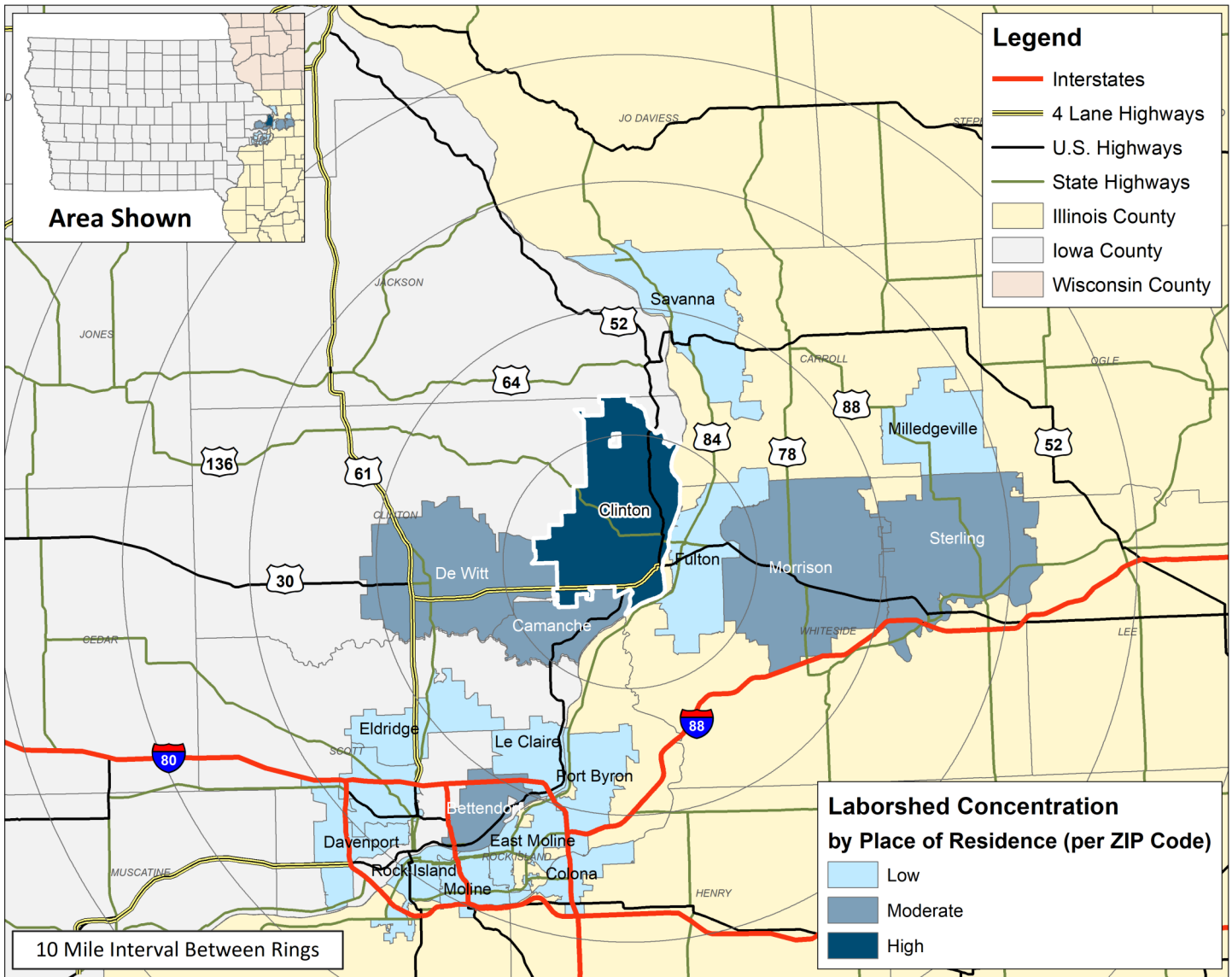
LABOR CHARACTERISTICS

ADVANCED MANUFACTURING



CLINTON LABORSHED AREA

**CONCENTRATION OF RESPONDENTS WITHIN THE LABORSHED AREA
WITH TRANSFERABLE EXPERIENCE/SKILLS BY PLACE OF RESIDENCE**



Workers who have transferable experience/skills in the industry are currently commuting an average of 15 miles one way for work. Those who are likely to change/accept employment are willing to commute an average of 26 miles one way for the right employment opportunity.

FOR MORE INFORMATION REGARDING THE CLINTON, IA LABORSHED, CONTACT:

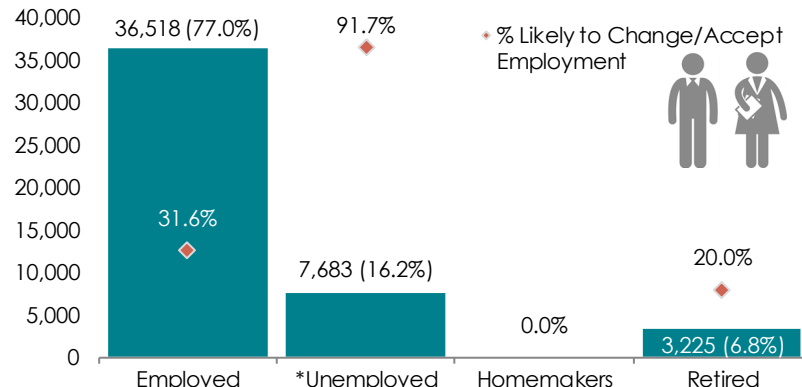
LABOR CHARACTERISTICS

ADVANCED MANUFACTURING

ESTIMATED AVAILABLE LABOR PER OCCUPATIONAL CATEGORY:

- Architectural & Engineering Managers - 637
- Assemblers & Fabricators, All Other - 641
- Chemical Equipment Operators & Tenders - 643
- Cutting, Punching, & Press Machine Operators - 642
- Electricians - 3,845
- Engineers, All Other - 4,485
- Heavy & Tractor-Trailer Truck Drivers - 3,846
- Industrial Machinery Mechanics - 1,283
- Industrial Production Managers - 1,281
- Industrial Truck & Tractor Operators - 644
- Inspectors, Testers, Sorters, Samplers, & Weighers - 3,204
- Installation, Maintenance, & Repair Workers - 4,486
- Laborers & Freight, Stock, & Material Movers, Hand - 1,285
- Mechanical Drafters - 638
- Millwrights - 639
- Multiple Machine Tool Operators - 1,284
- Production Workers, All Other - 10,254
- Supervisors of Mechanics, Installers, & Repairers - 1,282
- Supervisors of Production & Operating Workers - 2,564
- Team Assemblers - 640
- Welders, Cutters, Solderers, & Brazers - 3,203

ESTIMATED TOTAL BY EMPLOYMENT STATUS (PERCENTAGE):



*Employment status is self-identified by the survey respondent. The unemployment percentage does not reflect the unemployment rate published by the U.S. Bureau of Labor Statistics, which applies a stricter definition.

EMPLOYMENT STATS:

- 74.0% paid an hourly wage
- 97.3% are/were employed full-time
- 2.7% are/were employed part-time
- 4.8% are/were self-employed
- 10.7% hold two or more jobs
- Currently working an average of 45 hours/week

AN ESTIMATED TOTAL OF **47,426** PEOPLE IN THE LABORSHED AREA

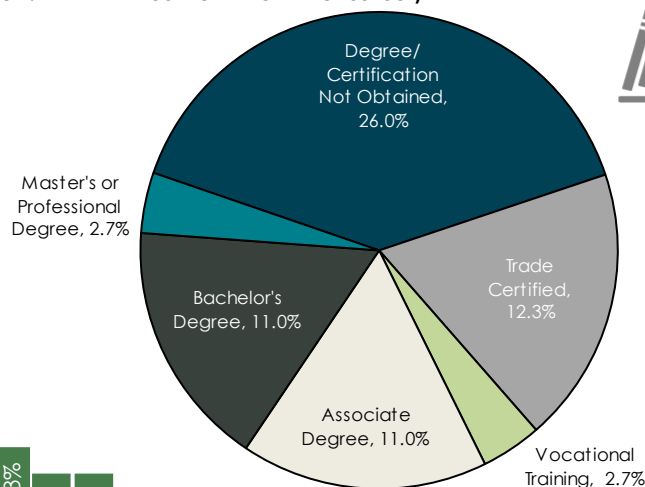
UNDEREMPLOYMENT (ESTIMATED):

- Low hours - 1.4% (54)
- Low income - 1.4% (54)
- Mismatch of skills - 4.1% (157)
- Total - 5.4% (206)

(Individuals counted only once when estimating Total Underemployment.)

EDUCATIONAL LEVEL:

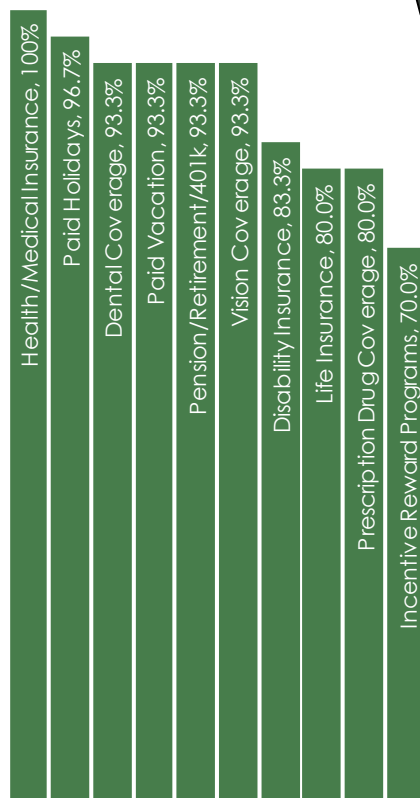
(65.7% HAVE AN EDUCATION BEYOND HIGH SCHOOL)



CURRENT BENEFITS:



DESIRED BENEFITS:



TOP JOB SEARCH RESOURCES:

(For those seeking employment opportunities, by use.)

- Internet - 78.9%
 - www.indeed.com
 - www.linkedin.com
 - www.monster.com
- Networking through friends, family or acquaintances - 33.8%
- IowaWORKS Centers - 23.9%
- Private Employment Services - 18.3%

WORKPLACE FLEXIBILITY:

(by percent of interest)

- Varied shifts - 42.9%
- Job teams - 14.3%
- Cross-training - 0.0%
- Job sharing - 0.0%
- Seasonal work - 11.1%
- Temporary work - 11.1%

LABOR CHARACTERISTICS

ADVANCED MANUFACTURING

OCCUPATION	OCCUPATIONAL CODE	MEAN WAGE	ENTRY WAGE	EXPERIENCED WAGE	MEDIAN WAGE	MEAN ANNUAL SALARY
Adhesive Bonding Machine Operators and Tenders	51-9191	\$20.13	\$15.43	\$22.48	\$21.17	\$41,874
Bus and Truck Mechanics and Diesel Engine Specialists	49-3031	\$22.72	\$14.74	\$26.71	\$22.32	\$47,257
Chemical Equipment Operators and Tenders	51-9011	\$32.31	\$25.35	\$35.78	\$33.63	\$67,200
Cleaning, Washing, and Metal Pickling Equipment Operators and Tenders	51-9192	\$14.83	\$11.51	\$16.49	\$14.02	\$30,845
Computer Hardware Engineers	17-2061	\$49.37	\$28.07	\$60.02	\$51.36	\$102,689
Cutting, Punching, and Press Machine Setters, Operators, and Tenders, Metal and Plastic	51-4031	\$18.02	\$13.87	\$20.09	\$17.71	\$37,478
Electrical and Electronic Engineering Technicians	17-3023	\$34.26	\$24.99	\$38.90	\$34.84	\$71,270
Electrical and Electronics Repairers, Commercial and Industrial Equipment	49-2094	\$27.60	\$20.31	\$31.24	\$28.52	\$57,403
Electrical Engineers	17-2071	\$51.03	\$36.55	\$58.26	\$49.20	\$106,136
Electricians	47-2111	\$28.19	\$17.37	\$33.60	\$27.71	\$58,632
Electro-Mechanical Technicians	17-3024	\$29.23	\$16.81	\$35.43	\$28.74	\$60,790
Electronic Equipment Installers and Repairers, Motor Vehicles	49-2096	\$15.99	\$11.45	\$18.25	\$17.22	\$33,250
Electronics Engineers, Except Computer	17-2072	\$42.89	\$32.95	\$47.86	\$41.25	\$89,205
Engineers, All Other	17-2199	\$44.53	\$27.97	\$52.81	\$41.65	\$92,619
Extruding and Drawing Machine Setters, Operators, and Tenders, Metal and Plastic	51-4021	\$25.59	\$19.66	\$28.56	\$27.27	\$53,231
First-Line Supervisors of Mechanics, Installers, and Repairers	49-1011	\$33.26	\$22.07	\$38.85	\$32.37	\$69,171
First-Line Supervisors of Production and Operating Workers	51-1011	\$30.39	\$20.28	\$35.45	\$29.19	\$63,220
Forging Machine Setters, Operators, and Tenders, Metal and Plastic	51-4022	\$17.96	\$15.63	\$19.12	\$17.56	\$37,353
Foundry Mold and Coremakers	51-4071	\$19.64	\$14.83	\$22.05	\$18.22	\$40,860
Furnace, Kiln, Oven, Drier, and Kettle Operators and Tenders	51-9051	\$18.28	\$13.69	\$20.57	\$17.91	\$38,012
Grinding, Lapping, Polishing, and Buffing Machine Tool Setters, Operators, and Tenders, Metal and Plastic	51-4033	\$17.68	\$13.32	\$19.86	\$17.22	\$36,771
Heat Treating Equipment Setters, Operators, and Tenders, Metal and Plastic	51-4191	\$18.02	\$14.68	\$19.69	\$17.43	\$37,479
Helpers--Production Workers	51-9198	\$16.26	\$11.73	\$18.52	\$16.22	\$33,812
Industrial Engineering Technicians	17-3026	\$30.11	\$20.38	\$34.97	\$28.29	\$62,620
Industrial Engineers	17-2112	\$42.42	\$31.52	\$47.87	\$39.69	\$88,239
Industrial Machinery Mechanics	49-9041	\$25.76	\$18.52	\$29.39	\$26.01	\$53,590
Industrial Production Managers	11-3051	\$53.53	\$34.01	\$63.30	\$48.44	\$111,352
Industrial Truck and Tractor Operators	53-7051	\$19.95	\$16.41	\$21.72	\$19.63	\$41,496
Inspectors, Testers, Sorters, Samplers, and Weighers	51-9061	\$23.07	\$15.53	\$26.84	\$21.80	\$47,990
Installation, Maintenance, and Repair Workers, All Other	49-9099	\$24.20	\$16.10	\$28.25	\$26.11	\$50,335
Lathe and Turning Machine Tool Setters, Operators, and Tenders, Metal and Plastic	51-4034	\$19.95	\$14.65	\$22.60	\$19.69	\$41,490
Machine Feeders and Offbearers	53-7063	\$23.85	\$14.94	\$28.31	\$22.66	\$49,614
Machinists	51-4041	\$22.08	\$15.53	\$25.35	\$21.30	\$45,922
Maintenance and Repair Workers, General	49-9071	\$21.10	\$13.83	\$24.74	\$20.24	\$43,896
Maintenance Workers, Machinery	49-9043	\$28.13	\$19.28	\$32.55	\$26.70	\$58,506
Material Moving Workers, All Other	53-7199	\$21.54	\$15.47	\$24.58	\$21.50	\$44,805
Materials Engineers	17-2131	\$48.46	\$35.18	\$55.10	\$50.32	\$100,794
Mechanical Drafters	17-3013	\$33.97	\$23.96	\$38.98	\$32.02	\$70,657
Mechanical Engineering Technicians	17-3027	\$26.37	\$18.72	\$30.20	\$24.80	\$54,854
Mechanical Engineers	17-2141	\$43.25	\$29.50	\$50.13	\$41.40	\$89,958
Metal Workers and Plastic Workers, All Other	51-4199	\$29.68	\$20.92	\$34.06	\$31.97	\$61,739
Metal-Refining Furnace Operators and Tenders	51-4051	\$19.56	\$15.71	\$21.48	\$18.74	\$40,682
Millwrights	49-9044	\$32.05	\$19.54	\$38.31	\$31.90	\$66,671
Mixing and Blending Machine Setters, Operators, and Tenders	51-9023	\$20.01	\$13.68	\$23.17	\$19.14	\$41,619
Model Makers, Metal and Plastic	51-4061	\$28.40	\$21.49	\$31.86	\$25.41	\$59,078
Molders, Shapers, and Casters, Except Metal and Plastic	51-9195	\$20.63	\$14.37	\$23.76	\$18.72	\$42,913
Multiple Machine Tool Setters, Operators, and Tenders, Metal and Plastic	51-4081	\$18.88	\$14.27	\$21.18	\$18.21	\$39,264
Packaging and Filling Machine Operators and Tenders	51-9111	\$20.54	\$12.57	\$24.52	\$18.06	\$42,717
Plant and System Operators, All Other	51-8099	\$34.37	\$27.18	\$37.96	\$34.71	\$71,483
Pourers and Casters, Metal	51-4052	\$21.78	\$14.30	\$25.52	\$22.90	\$45,311
Production Workers, All Other	51-9199	\$18.74	\$10.43	\$22.90	\$18.10	\$38,984
Rolling Machine Setters, Operators, and Tenders, Metal and Plastic	51-4023	\$19.32	\$14.48	\$21.73	\$19.10	\$40,178
Structural Metal Fabricators and Fitters	51-2041	\$20.00	\$16.60	\$21.71	\$19.31	\$41,606
Tool and Die Makers	51-4111	\$25.66	\$19.40	\$28.80	\$25.66	\$53,380
Tool Grinders, Filers, and Sharpeners	51-4194	\$20.56	\$14.51	\$23.58	\$18.53	\$42,756
Water and Wastewater Treatment Plant and System Operators	51-8031	\$24.79	\$14.31	\$30.04	\$26.00	\$51,572
Welders, Cutters, Solderers, and Brazers	51-4121	\$20.43	\$16.13	\$22.58	\$19.43	\$42,485

The 2021 Iowa Wage data for the Clinton Laborshed area was produced by the Labor Force & Occupational Analysis Bureau to provide communities local information on wages by occupation. The source of the wage and employment data is based on the May 2020 OES estimates. Additional occupational wage and employment data can be found at www.iowalmi.gov/laborshed.

Balance of data compiled by Iowa Workforce Development using Laborshed data released in 2021.

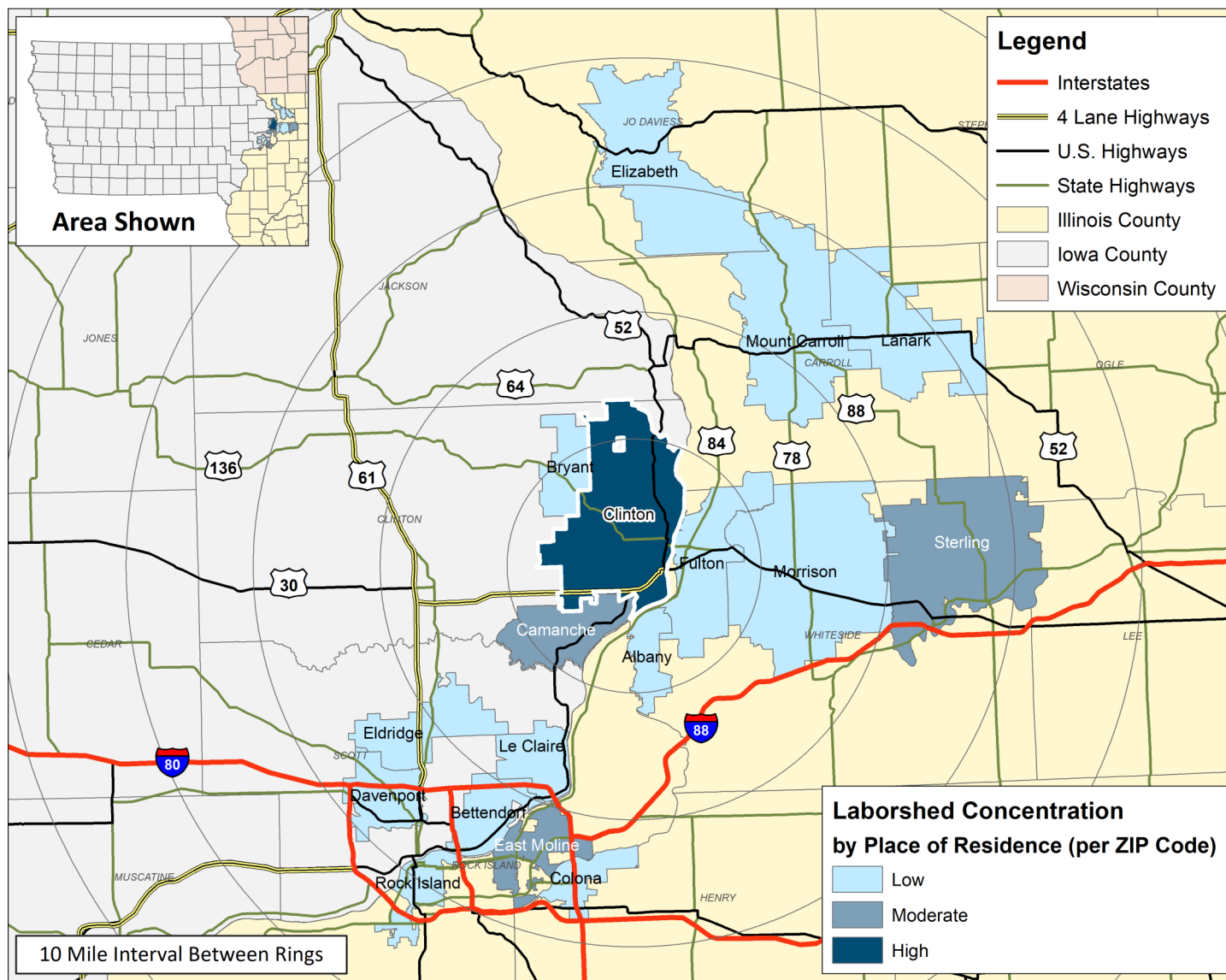
LABOR CHARACTERISTICS

BIOTECHNOLOGY



CLINTON LABORSHED AREA

**CONCENTRATION OF RESPONDENTS WITHIN THE LABORSHED AREA
WITH TRANSFERABLE EXPERIENCE/SKILLS BY PLACE OF RESIDENCE**



Workers who have transferable experience/skills in the industry are currently commuting an average of 11 miles one way for work. Those who are likely to change/accept employment are willing to commute an average of 26 miles one way for the right employment opportunity.

FOR MORE INFORMATION REGARDING THE CLINTON, IA LABORSHED, CONTACT:

LABOR CHARACTERISTICS



BIOTECHNOLOGY

ESTIMATED AVAILABLE LABOR PER OCCUPATIONAL CATEGORY:

- Architectural & Engineering Managers - 641
- Chemical Equipment Operators & Tenders - 645
- Engineers, All Other - 4,504
- Environmental Scientists & Specialists, Including Health - 642
- Farmers, Ranchers, & Other Agricultural Managers - 2,573
- Farmworkers, Farm, Ranch, & Aquacultural Animals - 644
- Industrial Production Managers - 1,287
- Inspectors, Testers, Sorters, Samplers, & Weighers - 3,217
- Life, Physical, & Social Science Technicians, All Other - 1,288
- Supervisors of Production & Operating Workers - 2,574
- Veterinary Technologists & Technicians - 643

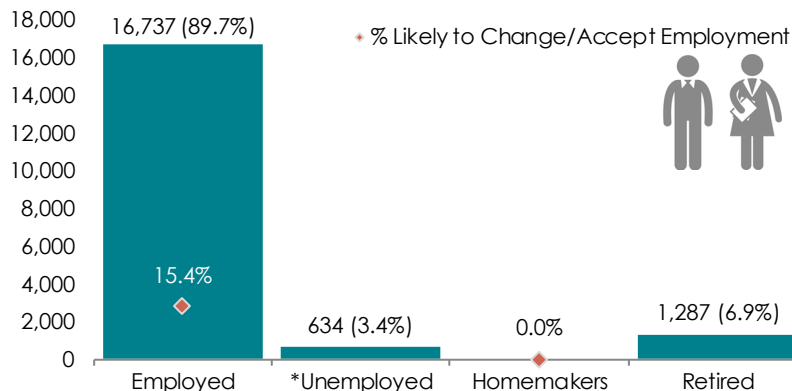
AN ESTIMATED TOTAL OF **18,658** PEOPLE IN THE LABORSHED AREA

UNDEREMPLOYMENT (ESTIMATED):

- Low hours - 3.4% (51)
- Low income - 0.0%
- Mismatch of skills - 0.0%
- Total - 3.4% (51)

(Individuals counted only once when estimating Total Underemployment.)

ESTIMATED TOTAL BY EMPLOYMENT STATUS (PERCENTAGE):



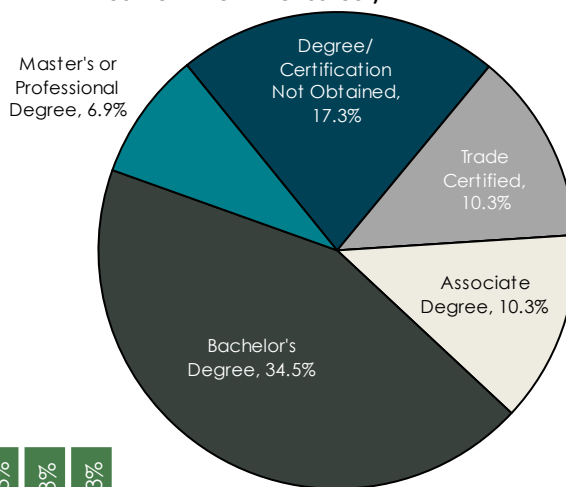
*Employment status is self-identified by the survey respondent. The unemployment percentage does not reflect the unemployment rate published by the U.S. Bureau of Labor Statistics, which applies a stricter definition.

EMPLOYMENT STATS:

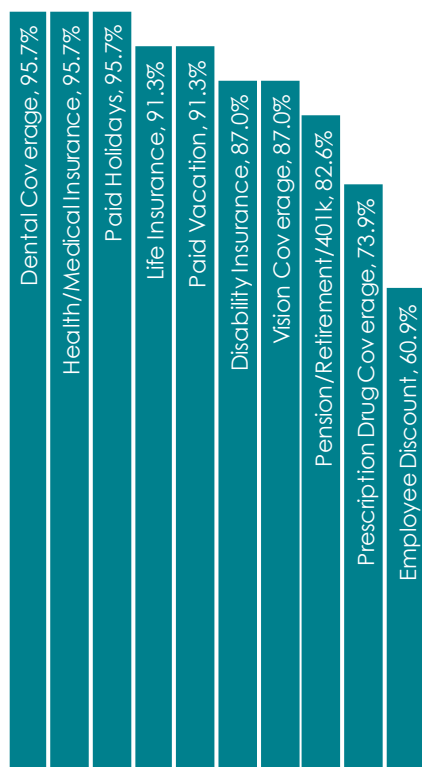
- 51.7% paid an annual salary
- 93.1% are/were employed full-time
- 6.9% are/were employed part-time
- 13.8% are/were self-employed
- 11.5% hold two or more jobs
- Currently working an average of 46 hours/week

EDUCATIONAL LEVEL:

(79.3% HAVE AN EDUCATION BEYOND HIGH SCHOOL)



CURRENT BENEFITS:



DESIRED BENEFITS:



TOP JOB SEARCH RESOURCES:

(For those seeking employment opportunities, by use.)

- Internet - 62.1%
 - www.indeed.com
 - www.linkedin.com
 - www.monster.com
- Networking through friends, family or acquaintances - 24.1%
- Private Employment Services - 17.2%
- IowaWORKS Centers - 13.8%



WORKPLACE FLEXIBILITY:

(by percent of interest)

- Job sharing - 33.3%
- Job teams - 33.3%
- Cross-training - 0.0%
- Job teams - 0.0%
- Seasonal work - 0.0%
- Temporary work - 0.0%



LABOR CHARACTERISTICS



BIOTECHNOLOGY

OCCUPATION	OCCUPATIONAL CODE	MEAN WAGE	ENTRY WAGE	EXPERIENCED WAGE	MEDIAN WAGE	MEAN ANNUAL SALARY
Agricultural Inspectors	45-2011	\$23.28	\$17.44	\$26.20	\$23.08	\$48,426
Architectural and Engineering Managers	11-9041	\$65.59	\$49.44	\$73.67	\$64.42	\$136,434
Biological Scientists, All Other	19-1029	\$38.40	\$28.94	\$43.14	\$38.48	\$79,879
Biological Technicians	19-4021	\$22.40	\$15.05	\$26.08	\$18.89	\$46,597
Chemical Equipment Operators and Tenders	51-9011	\$32.31	\$25.35	\$35.78	\$33.63	\$67,200
Chemical Technicians	19-4031	\$27.57	\$18.90	\$31.91	\$28.01	\$57,352
Chemists	19-2031	\$33.15	\$21.67	\$38.89	\$31.72	\$68,959
Dietetic Technicians	29-2051	\$13.63	\$11.24	\$14.82	\$13.44	\$28,343
Dietitians and Nutritionists	29-1031	\$26.83	\$20.58	\$29.96	\$26.68	\$55,816
Engineers, All Other	17-2199	\$44.53	\$27.97	\$52.81	\$41.65	\$92,619
Environmental Engineering Technicians	17-3025	\$29.85	\$18.23	\$35.66	\$29.11	\$62,087
Environmental Engineers	17-2081	\$45.25	\$33.92	\$50.92	\$45.46	\$94,127
Environmental Scientists and Specialists, Including Health	19-2041	\$36.63	\$22.77	\$43.56	\$34.85	\$76,187
Farmworkers and Laborers, Crop, Nursery, and Greenhouse	45-2092	\$17.08	\$12.08	\$19.58	\$15.19	\$35,530
Farmworkers, Farm, Ranch, and Aquacultural Animals	45-2093	\$21.62	\$13.34	\$25.76	\$19.55	\$44,966
First-Line Supervisors of Farming, Fishing, and Forestry Workers	45-1011	\$22.96	\$21.75	\$23.56	\$22.60	\$47,753
First-Line Supervisors of Production and Operating Workers	51-1011	\$30.39	\$20.28	\$35.45	\$29.19	\$63,220
Food Scientists and Technologists	19-1012	\$35.52	\$20.74	\$42.91	\$30.58	\$73,875
Foresters	19-1032	\$30.31	\$28.38	\$31.27	\$29.61	\$63,043
Graders and Sorters, Agricultural Products	45-2041	\$13.76	\$9.52	\$15.89	\$12.30	\$28,630
Industrial Engineers	17-2112	\$42.42	\$31.52	\$47.87	\$39.69	\$88,239
Industrial Production Managers	11-3051	\$53.53	\$34.01	\$63.30	\$48.44	\$111,352
Inspectors, Testers, Sorters, Samplers, and Weighers	51-9061	\$23.07	\$15.53	\$26.84	\$21.80	\$47,990
Life, Physical, and Social Science Technicians, All Other	19-4099	\$21.33	\$12.22	\$25.89	\$19.37	\$44,366
Natural Sciences Managers	11-9121	\$73.00	\$38.78	\$90.11	\$62.78	\$151,840
Nuclear Medicine Technologists	29-2033	\$35.93	\$28.45	\$39.67	\$35.50	\$74,738
Plant and System Operators, All Other	51-8099	\$34.37	\$27.18	\$37.96	\$34.71	\$71,483
Soil and Plant Scientists	19-1013	\$34.37	\$22.28	\$40.41	\$29.50	\$71,490
Veterinary Technologists and Technicians	29-2056	\$16.12	\$13.18	\$17.58	\$15.54	\$33,522
Water and Wastewater Treatment Plant and System Operators	51-8031	\$24.79	\$14.31	\$30.04	\$26.00	\$51,572

The 2021 Iowa Wage data for the Clinton Laborshed area was produced by the Labor Force & Occupational Analysis Bureau to provide communities local information on wages by occupation. The source of the wage and employment data is based on the May 2020 OES estimates. Additional occupational wage and employment data can be found at www.iowalmi.gov/laborshed.

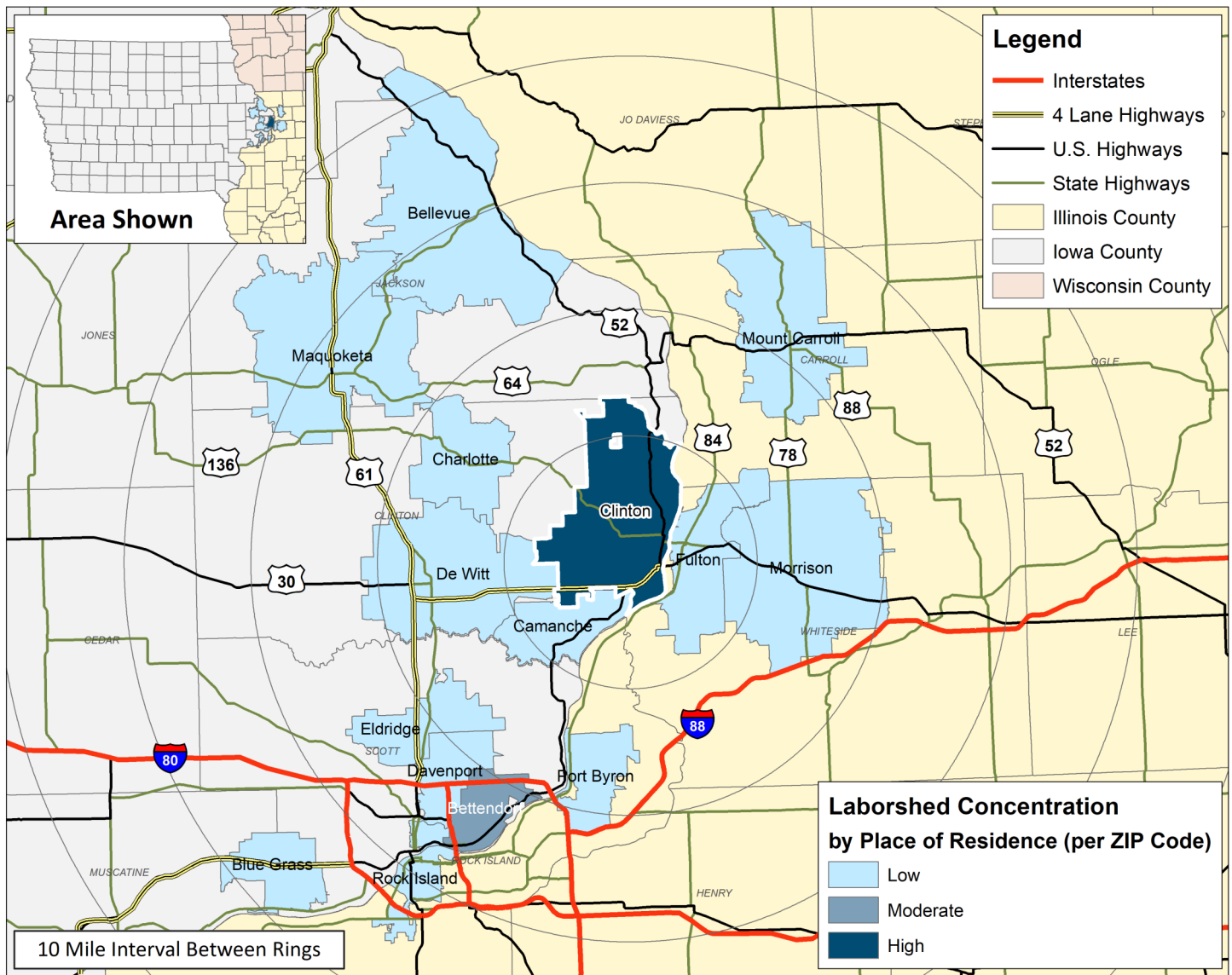
LABOR CHARACTERISTICS

FINANCIAL SERVICES



CLINTON LABORSHED AREA

**CONCENTRATION OF RESPONDENTS WITHIN THE LABORSHED AREA
WITH TRANSFERABLE EXPERIENCE/SKILLS BY PLACE OF RESIDENCE**



Workers who have transferable experience/skills in the industry are currently commuting an average of 7 miles one way for work. Those who are likely to change/accept employment are willing to commute an average of 15 miles one way for the right employment opportunity.

FOR MORE INFORMATION REGARDING THE CLINTON, IA LABORSHED, CONTACT:

LABOR CHARACTERISTICS



FINANCIAL SERVICES

ESTIMATED AVAILABLE LABOR PER OCCUPATIONAL CATEGORY:

- Accountants & Auditors - 2,558
- Bill & Account Collectors - 1,278
- Billing & Posting Clerks - 1,919
- Bookkeeping, Accounting, & Auditing Clerks - 3,838
- Credit Authorizers, Checkers, & Clerks - 1,279
- Customer Service Representatives - 4,477
- Financial Managers - 3,837
- Financial Specialists, All Other - 638
- Insurance Claims & Policy Processing Clerks - 642
- Loan Interviewers & Clerks - 641
- Securities, Commodities, & Financial Services Sales Agents - 639
- Supervisors of Office & Administrative Support Workers - 7,675
- Tellers - 640

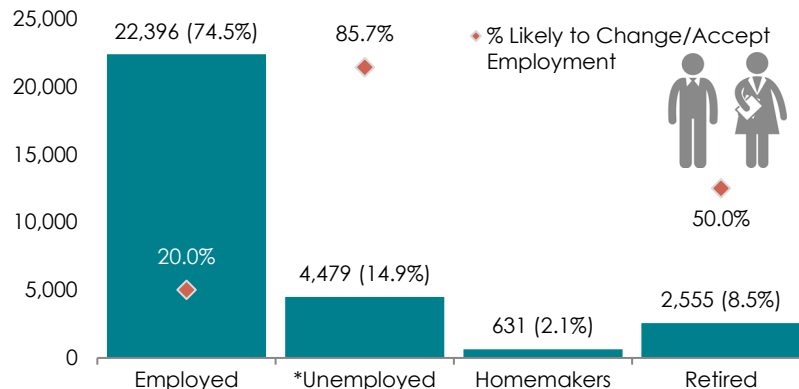
AN ESTIMATED TOTAL OF **30,061** PEOPLE IN THE LABORSHED AREA

UNDEREMPLOYMENT (ESTIMATED):

- Low hours - 6.4% (155)
- Low income - 0.0%
- Mismatch of skills - 4.3% (104)
- Total - 8.5% (206)

(Individuals counted only once when estimating Total Underemployment.)

ESTIMATED TOTAL BY EMPLOYMENT STATUS (PERCENTAGE):



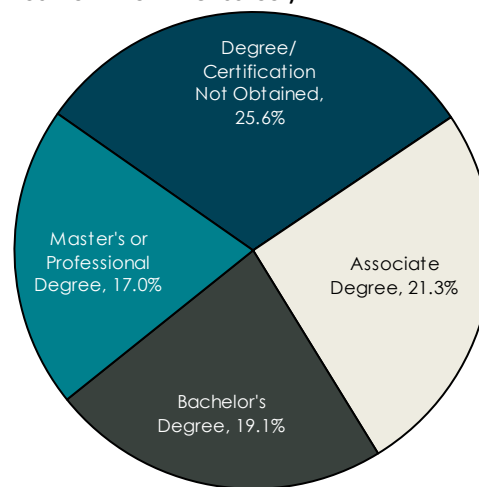
*Employment status is self-identified by the survey respondent. The unemployment percentage does not reflect the unemployment rate published by the U.S. Bureau of Labor Statistics, which applies a stricter definition.

EMPLOYMENT STATS:

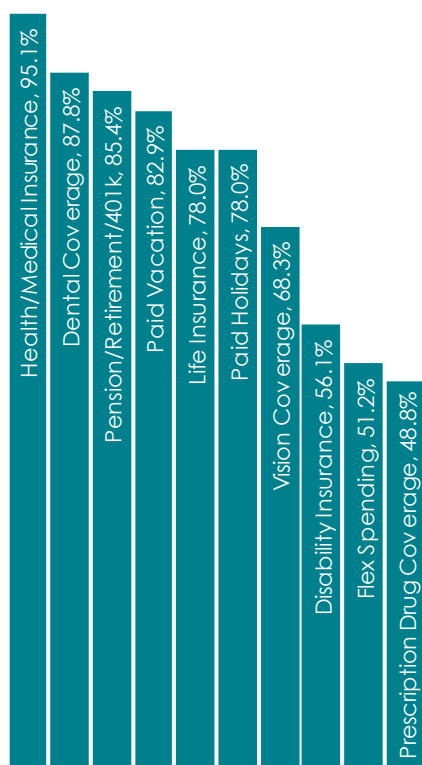
- 61.7% paid an hourly wage
- 80.4% are/were employed full-time
- 19.6% are/were employed part-time
- 13.9% are/were self-employed
- 2.9% hold two or more jobs
- Currently working an average of 40 hours/week

EDUCATIONAL LEVEL:

(83.0% HAVE AN EDUCATION BEYOND HIGH SCHOOL)



CURRENT BENEFITS:



DESIRED BENEFITS:



TOP JOB SEARCH RESOURCES:

(For those seeking employment opportunities, by use.)

- Internet - 83.0%
 - www.indeed.com
 - www.linkedin.com
 - www.facebook.com
- Networking through friends, family or acquaintances - 38.3%
- IowaWORKS Centers - 25.5%
- Private Employment Services - 19.1%



WORKPLACE FLEXIBILITY:

(by percent of interest)

- Cross-training - 0.0%
- Job sharing - 0.0%
- Job teams - 0.0%
- Varied shifts - 0.0%
- Seasonal work - 0.0%
- Temporary work - 0.0%



LABOR CHARACTERISTICS



FINANCIAL SERVICES

OCCUPATION	OCCUPATIONAL CODE	MEAN WAGE	ENTRY WAGE	EXPERIENCED WAGE	MEDIAN WAGE	MEAN ANNUAL SALARY
Accountants and Auditors	13-2011	\$33.44	\$21.74	\$39.29	\$30.07	\$69,559
Actuaries	15-2011	\$54.65	\$36.52	\$63.72	\$50.96	\$113,680
Bill and Account Collectors	43-3011	\$17.79	\$13.31	\$20.03	\$15.41	\$37,001
Billing and Posting Clerks	43-3021	\$18.47	\$14.37	\$20.51	\$17.86	\$38,409
Bookkeeping, Accounting, and Auditing Clerks	43-3031	\$19.25	\$12.73	\$22.51	\$18.48	\$40,042
Brokerage Clerks	43-4011	\$23.32	\$16.50	\$26.72	\$21.96	\$48,498
Claims Adjusters, Examiners, and Investigators	13-1031	\$30.23	\$20.26	\$35.21	\$28.68	\$62,869
Compliance Officers	13-1041	\$31.95	\$20.13	\$37.87	\$29.85	\$66,464
Computer and Information Systems Managers	11-3021	\$59.15	\$39.59	\$68.93	\$56.53	\$123,034
Credit Analysts	13-2041	\$40.96	\$23.26	\$49.80	\$35.51	\$85,189
Credit Counselors	13-2071	\$19.91	\$14.61	\$22.57	\$19.22	\$41,420
Customer Service Representatives	43-4051	\$18.91	\$12.32	\$22.21	\$17.45	\$39,330
Financial Clerks, All Other	43-3099	\$21.52	\$15.82	\$24.37	\$21.21	\$44,761
Financial Examiners	13-2061	\$38.00	\$22.56	\$45.73	\$33.66	\$79,047
Financial Managers	11-3031	\$55.44	\$32.59	\$66.87	\$49.90	\$115,320
First-Line Supervisors of Non-Retail Sales Workers	41-1012	\$38.58	\$24.57	\$45.59	\$34.92	\$80,252
First-Line Supervisors of Office and Administrative Support Workers	43-1011	\$26.95	\$17.35	\$31.75	\$25.39	\$56,062
Insurance Claims and Policy Processing Clerks	43-9041	\$19.39	\$15.26	\$21.45	\$18.85	\$40,328
Insurance Sales Agents	41-3021	\$32.19	\$14.97	\$40.80	\$24.26	\$66,957
Insurance Underwriters	13-2053	\$33.56	\$21.75	\$39.47	\$31.10	\$69,812
Loan Interviewers and Clerks	43-4131	\$19.65	\$15.74	\$21.60	\$19.08	\$40,865
Loan Officers	13-2072	\$35.34	\$20.98	\$42.51	\$31.96	\$73,498
New Accounts Clerks	43-4141	\$18.65	\$13.69	\$21.13	\$18.17	\$38,792
Personal Financial Advisors	13-2052	\$43.26	\$18.74	\$55.53	\$32.23	\$89,991
Securities, Commodities, and Financial Services Sales Agents	41-3031	\$31.38	\$17.42	\$38.36	\$23.57	\$65,267
Statistical Assistants	43-9111	\$35.38	\$24.43	\$40.85	\$31.16	\$73,586
Statisticians	15-2041	\$28.56	\$15.58	\$35.04	\$23.44	\$59,398
Telemarketers	41-9041	\$14.23	\$10.87	\$15.91	\$13.83	\$29,590
Tellers	43-3071	\$14.47	\$11.56	\$15.93	\$14.57	\$30,105

The 2021 Iowa Wage data for the Clinton Laborshed area was produced by the Labor Force & Occupational Analysis Bureau to provide communities local information on wages by occupation. The source of the wage and employment data is based on the May 2020 OES estimates. Additional occupational wage and employment data can be found at www.iowalmi.gov/laborshed.

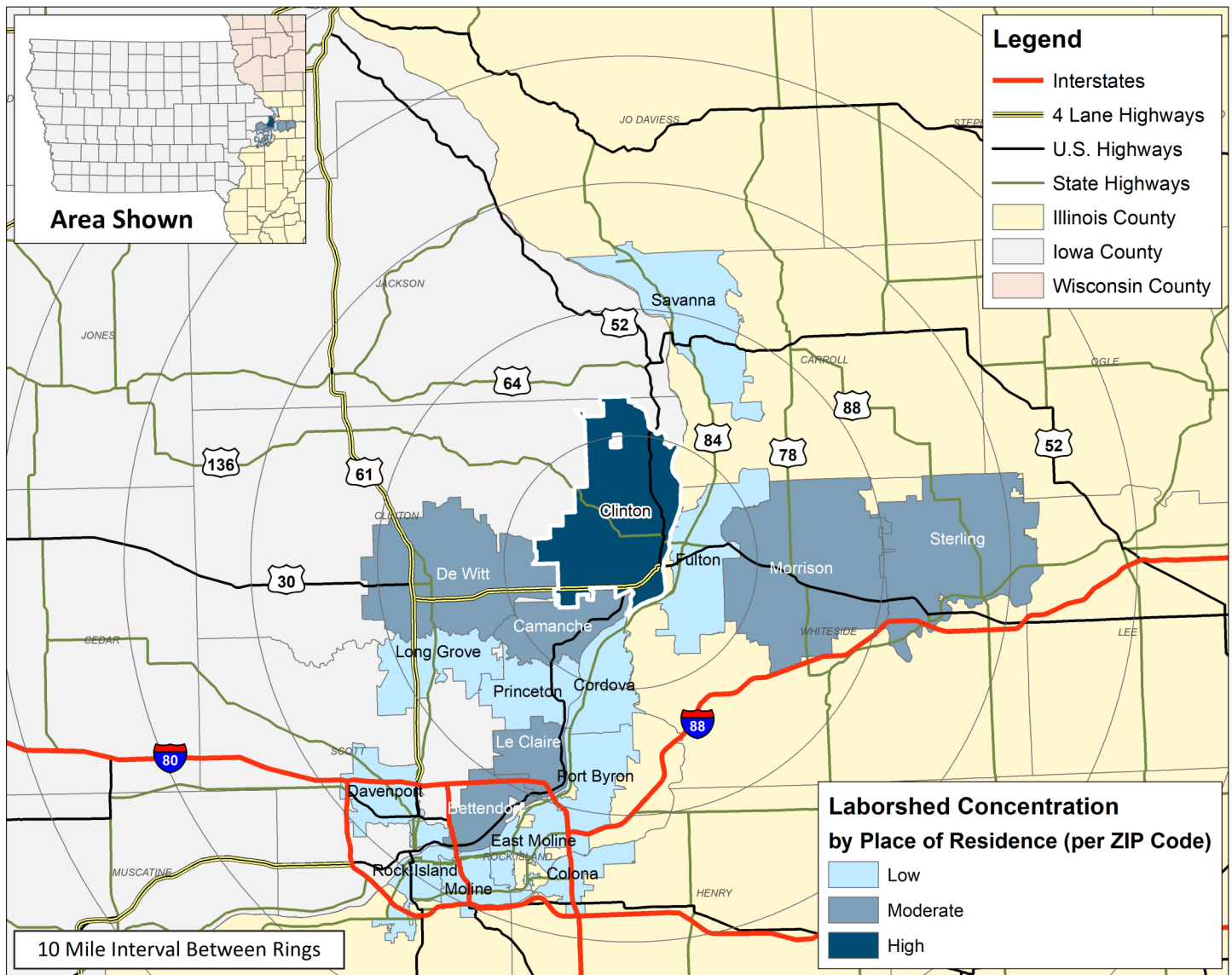
LABOR CHARACTERISTICS

WAREHOUSE & DISTRIBUTION



CLINTON LABORSHED AREA

**CONCENTRATION OF RESPONDENTS WITHIN THE LABORSHED AREA
WITH TRANSFERABLE EXPERIENCE/SKILLS BY PLACE OF RESIDENCE**



Workers who have transferable experience/skills in the industry are currently commuting an average of 13 miles one way for work. Those who are likely to change/accept employment are willing to commute an average of 24 miles one way for the right employment opportunity.

FOR MORE INFORMATION REGARDING THE CLINTON, IA LABORSHED, CONTACT:

LABOR CHARACTERISTICS



WAREHOUSE & DISTRIBUTION

ESTIMATED AVAILABLE LABOR PER OCCUPATIONAL CATEGORY:

- Automotive Body & Related Repairers - 638
- Automotive Service Technicians & Mechanics - 1,277
- Dispatchers, Except Police, Fire, & Ambulance - 636
- Heavy & Tractor-Trailer Truck Drivers - 3,829
- Industrial Machinery Mechanics - 1,278
- Industrial Truck & Tractor Operators - 641
- Inspectors, Testers, Sorters, Samplers, & Weighers - 3,191
- Installation, Maintenance, & Repair Workers - 4,467
- Laborers & Freight, Stock, & Material Movers, Hand - 1,279
- Logisticians - 1,275
- Production Workers, All Other - 10,212
- Shipping, Receiving, & Traffic Clerks - 637
- Supervisors of Mechanics, Installers, & Repairers - 1,276
- Supervisors of Production & Operating Workers - 2,553
- Team Assemblers - 639
- Transportation Workers, All Other - 640

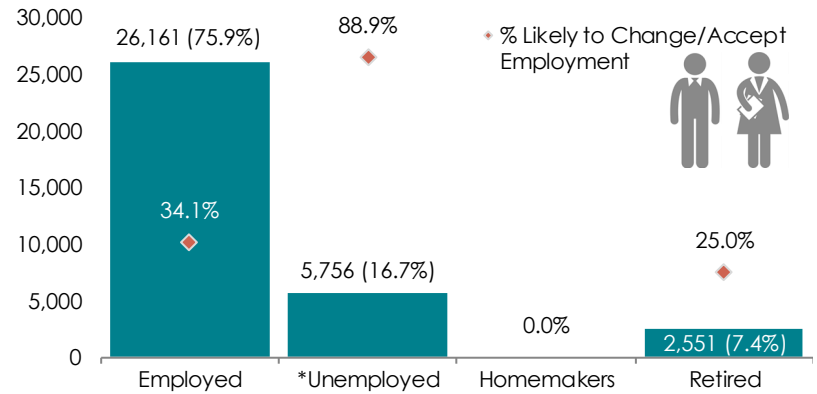
AN ESTIMATED TOTAL OF **34,468** PEOPLE IN THE LABORSHED AREA

UNDEREMPLOYMENT (ESTIMATED):

- Low hours - 1.9% (53)
- Low income - 1.9% (53)
- Mismatch of skills - 3.7% (103)
- Total - 5.6% (156)

(Individuals counted only once when estimating Total Underemployment.)

ESTIMATED TOTAL BY EMPLOYMENT STATUS (PERCENTAGE):



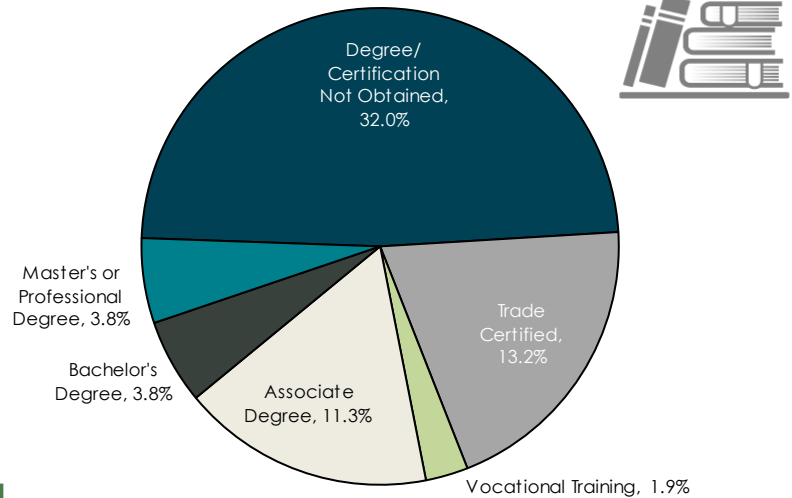
*Employment status is self-identified by the survey respondent. The unemployment percentage does not reflect the unemployment rate published by the U.S. Bureau of Labor Statistics, which applies a stricter definition.

EMPLOYMENT STATS:

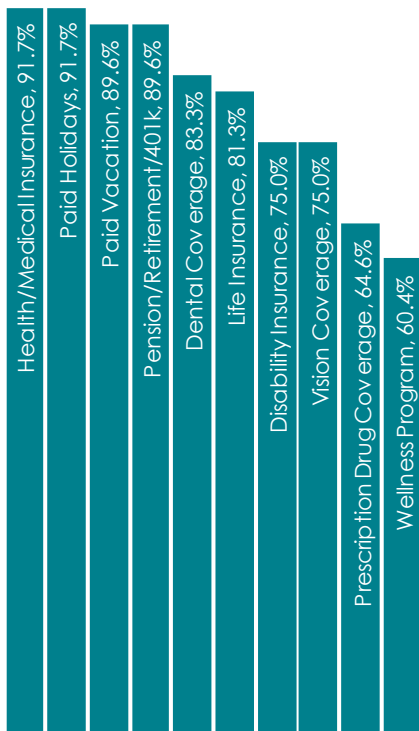
- 79.2% paid an hourly wage
- 96.3% are/were employed full-time
- 3.7% are/were employed part-time
- 11.1% are/were self-employed
- 7.5% hold two or more jobs
- Currently working an average of 45 hours/week

EDUCATIONAL LEVEL:

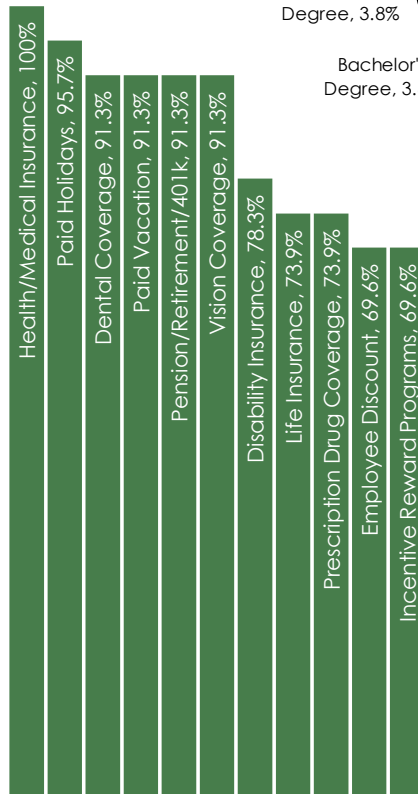
(66.0% HAVE AN EDUCATION BEYOND HIGH SCHOOL)



CURRENT BENEFITS:



DESIRED BENEFITS:



TOP JOB SEARCH RESOURCES:

(For those seeking employment opportunities, by use.)

- Internet - 80.8%
 - www.indeed.com
 - www.linkedin.com
 - www.monster.com
- Networking through friends, family or acquaintances - 36.5%
- IowaWORKS Centers - 21.2%
- Newspapers - 17.3%
- Private Employment Service - 17.3%

WORKPLACE FLEXIBILITY:

(by percent of interest)

- Varied shifts - 40.0%
- Job teams - 16.7%
- Cross-training - 0.0%
- Job sharing - 0.0%
- Seasonal work - 16.7%
- Temporary work - 16.7%



LABOR CHARACTERISTICS



WAREHOUSE & DISTRIBUTION

OCCUPATION	OCCUPATIONAL CODE	MEAN WAGE	ENTRY WAGE	EXPERIENCED WAGE	MEDIAN WAGE	MEAN ANNUAL SALARY
Aircraft Mechanics and Service Technicians	49-3011	\$27.78	\$17.32	\$33.02	\$27.53	\$57,791
Automotive Body and Related Repairers	49-3021	\$22.60	\$14.99	\$26.41	\$21.70	\$47,018
Automotive Service Technicians and Mechanics	49-3023	\$21.07	\$14.12	\$24.55	\$20.67	\$43,827
Bus and Truck Mechanics and Diesel Engine Specialists	49-3031	\$22.72	\$14.74	\$26.71	\$22.32	\$47,257
Cargo and Freight Agents	43-5011	\$21.47	\$15.60	\$24.41	\$20.03	\$44,664
Cleaners of Vehicles and Equipment	53-7061	\$13.43	\$9.98	\$15.15	\$12.61	\$27,926
Conveyor Operators and Tenders	53-7011	\$17.24	\$13.45	\$19.14	\$17.01	\$35,866
Dispatchers, Except Police, Fire, and Ambulance	43-5032	\$19.99	\$13.16	\$23.41	\$18.80	\$41,584
First-Line Supervisors of Mechanics, Installers, and Repairers	49-1011	\$33.26	\$22.07	\$38.85	\$32.37	\$69,171
First-Line Supervisors of Production and Operating Workers	51-1011	\$30.39	\$20.28	\$35.45	\$29.19	\$63,220
Heavy and Tractor-Trailer Truck Drivers	53-3032	\$21.08	\$15.66	\$23.79	\$19.88	\$43,846
Helpers--Installation, Maintenance, and Repair Workers	49-9098	\$18.96	\$11.53	\$22.68	\$17.05	\$39,446
Helpers--Production Workers	51-9198	\$16.26	\$11.73	\$18.52	\$16.22	\$33,812
Industrial Machinery Mechanics	49-9041	\$25.76	\$18.52	\$29.39	\$26.01	\$53,590
Industrial Truck and Tractor Operators	53-7051	\$19.95	\$16.41	\$21.72	\$19.63	\$41,496
Inspectors, Testers, Sorters, Samplers, and Weighers	51-9061	\$23.07	\$15.53	\$26.84	\$21.80	\$47,990
Installation, Maintenance, and Repair Workers, All Other	49-9099	\$24.20	\$16.10	\$28.25	\$26.11	\$50,335
Laborers and Freight, Stock, and Material Movers, Hand	53-7062	\$16.54	\$11.54	\$19.04	\$16.05	\$34,399
Light Truck or Delivery Services Drivers	53-3033	\$16.00	\$9.94	\$19.04	\$14.74	\$33,288
Logisticians	13-1081	\$39.59	\$25.76	\$46.50	\$38.91	\$82,342
Machine Feeders and Offbearers	53-7063	\$23.85	\$14.94	\$28.31	\$22.66	\$49,614
Maintenance and Repair Workers, General	49-9071	\$21.10	\$13.83	\$24.74	\$20.24	\$43,896
Packers and Packagers, Hand	53-7064	\$15.79	\$11.63	\$17.87	\$15.47	\$32,837
Production Workers, All Other	51-9199	\$18.74	\$10.43	\$22.90	\$18.10	\$38,984
Production, Planning, and Expediting Clerks	43-5061	\$26.52	\$17.69	\$30.94	\$25.19	\$55,169
Sailors and Marine Oilers	53-5011	\$19.48	\$14.61	\$21.92	\$18.10	\$40,528
Shipping, Receiving, and Traffic Clerks	43-5071	\$18.61	\$12.73	\$21.54	\$17.46	\$38,701
Transportation, Storage, and Distribution Managers	11-3071	\$46.14	\$29.35	\$54.54	\$42.93	\$95,979
Weighers, Measurers, Checkers, and Samplers, Recordkeeping	43-5111	\$17.30	\$10.95	\$20.47	\$18.07	\$35,981

The 2021 Iowa Wage data for the Clinton Laborshed area was produced by the Labor Force & Occupational Analysis Bureau to provide communities local information on wages by occupation. The source of the wage and employment data is based on the May 2020 OES estimates. Additional occupational wage and employment data can be found at www.iowalmi.gov/laborshed.